



PAVING THE SAFE WAY FOR AESTHETIC

**CONTACT US:**

Address:RoomA 1702-1,Xinyi Building,Shifu Road,Wenzhou, Zhejiang, China

Tel:86-577-88267991

Web:[www.unimaster.com.cn](http://www.unimaster.com.cn)

# Medical Cosmetic Series



## About Us

We're, UNIMASTER, a new brand, originated with a mission to deliver best care to worldwide people, and to create and realize our own value and sense to human health. We, as a manufacturer and distributor, even more than both, have engaged in medical field since we graduated from university in early 2000s and devote to establish the sales channel of our products to more than 85 countries and be serving hundreds of customers, including wholesalers, hospitals, clinics, and pharmaceutical stores. May be different, we also have sufficient experience in deep working with more than 20 foreign manufacturers in strategic project of supplements, not limited in raw material, half finished products, molds and production lines, and technical supports.

We are not young in medical, and we create this new framework for purpose to practice our thoughts summed up from the comprehension to the past and endeavor a higher-class model to run better. With background of our 20 years working in disposable medical, we are paving our way and focus on launching our products upgraded into four main fields, medication injection, wound care, medical cosmetology, and enteral feeding. We emphasize technical innovation and have super team for R&D, production, and sales. All our products are manufactured under quality management system ISO 9001:2015 and also obtain quality certificate CE issued by TUV.

# Why choose Unimaster



With strict verification system, we select premium Japan Stainless Steel as the fundamental to ensure the high quality of our needles with maximum sharpness and less corrosion.



Our unique and advanced Nitrogen Hardening Technology in handling on the bevel to realize super performance in 20, 30, 50 multi times injection without damage to needle tip.



30 Years know-how from strip welding, extruding, OD Reduction, Cutting, Polishing, Grinding and Ultrasonic Washing on cannula to coated and assembled needle, our technology allows for smoother insertion into the.



Other than TW and RW conventional needles, we are able to make Ultra-Thin Wall for nano needles to create maximum lumen and improve the flow rate of liquid by more than 20%.



4  
Advantage



## Meso Needle



### 1.2mm Ultra Short Needle

- Unimaster needle is made of hard Japanese steel that resists blunting.
- The micro-polishing technology offers a superior sharpness and ultra-thin wall structure.
- It maximizes patient comfort with an almost painless injection experience while minimizing the effects of bleeding, bruising, swelling.



- Adjustable series
- Adjust the length range to 0-7mm by rotating the screw knob.

### Specification:

Metric Size(mm)	0.3	0.26	0.23	0.2	0.18
Inch Size	30G	31G	32G	33G	34G
Hub Color	Yellow	White	Green	Grey	Orange
Nominal Length	1.2mm-25mm				
Wall Thickness	Ultra Thin Wall				
Packing	100pcs/box, 50boxes/carton, 5000pcs/carton				

### Multi style packaging (recommended) :



- Premium package  
No paper scraps  
No risk of lesions of vessels

- Plastic package  
High cost performance  
High market share

- Tasse package  
Innovative, Unique  
More easier stripping

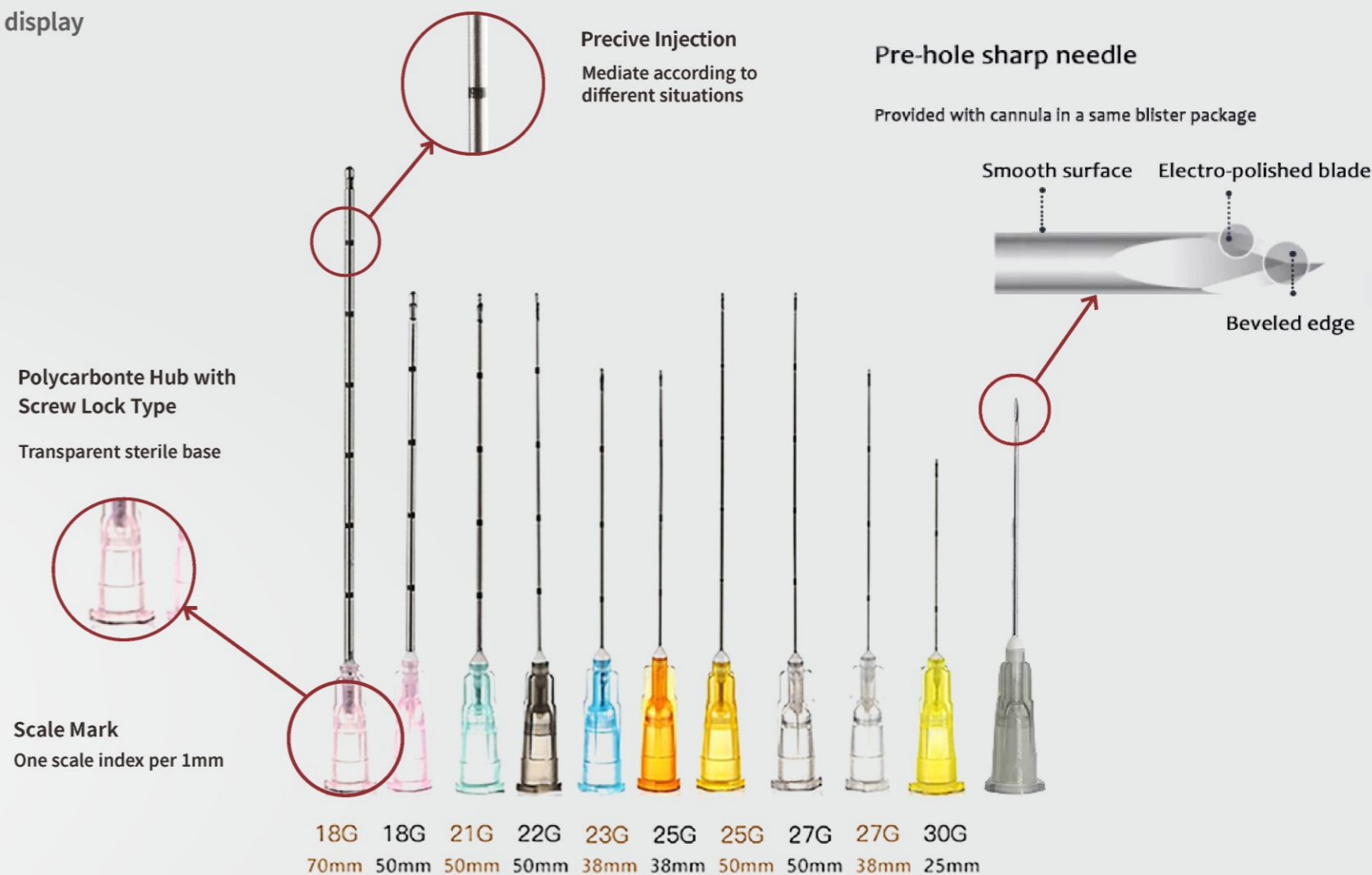
# Blunt Cannula



Anatomical Region	Cannula recommendation	
Periorbital	25, 27, 30G	25 ~ 40mm
Forehead	25, 27G	40 ~ 50mm
Brow	25, 27G	25 ~ 50mm
Temporal, Middle third of the face, Lower third of the face	25, 27G	40 ~ 50mm
Lips	25 ~ 30G	25 ~ 40mm
Chin, Neck, Decollete, Hands	25 ~ 27G	40 ~ 50mm

<b>17G</b>	70 / 90mm
<b>18G</b>	50 / 60 / 70 / 90mm
<b>19G</b>	50 / 60 / 70 / 90mm
<b>20G</b>	25 / 30 / 35 / 40 / 50 / 60 / 70 / 90mm
<b>21G</b>	25 / 30 / 35 / 40 / 50 / 60 / 70 / 90mm
<b>22G</b>	25 / 30 / 35 / 40 / 50 / 60 / 70 / 90mm
<b>23G</b>	25 / 30 / 35 / 40 / 50 / 60 / 70 / 90mm
<b>24G</b>	25 / 30 / 35 / 40 / 50 / 60 / 70 / 90mm
<b>25G</b>	25 / 30 / 35 / 40 / 50 / 60 / 70 / 90mm
<b>26G</b>	25 / 30 / 35 / 40 / 50 / 60 / 70 / 90mm
<b>27G</b>	25 / 30 / 35 / 40 / 50 / 60 / 70 / 90mm
<b>29G</b>	25 / 30 / 35 / 40 / 50 / 60 / 70 / 90mm
<b>30G</b>	25 / 30 / 35 / 40 / 50 / 60 / 70 / 90mm

## Detail display



## Multi needle — 4 Pins

### Water Mesotherapy Working Theory

Water mesotherapy is to inject hyaluronic acid into skin. Hyaluronic acid contains moisture, 200-300 times as rich as one's body. So that it makes the skin smooth, soft, bright and hydrated after the injection.

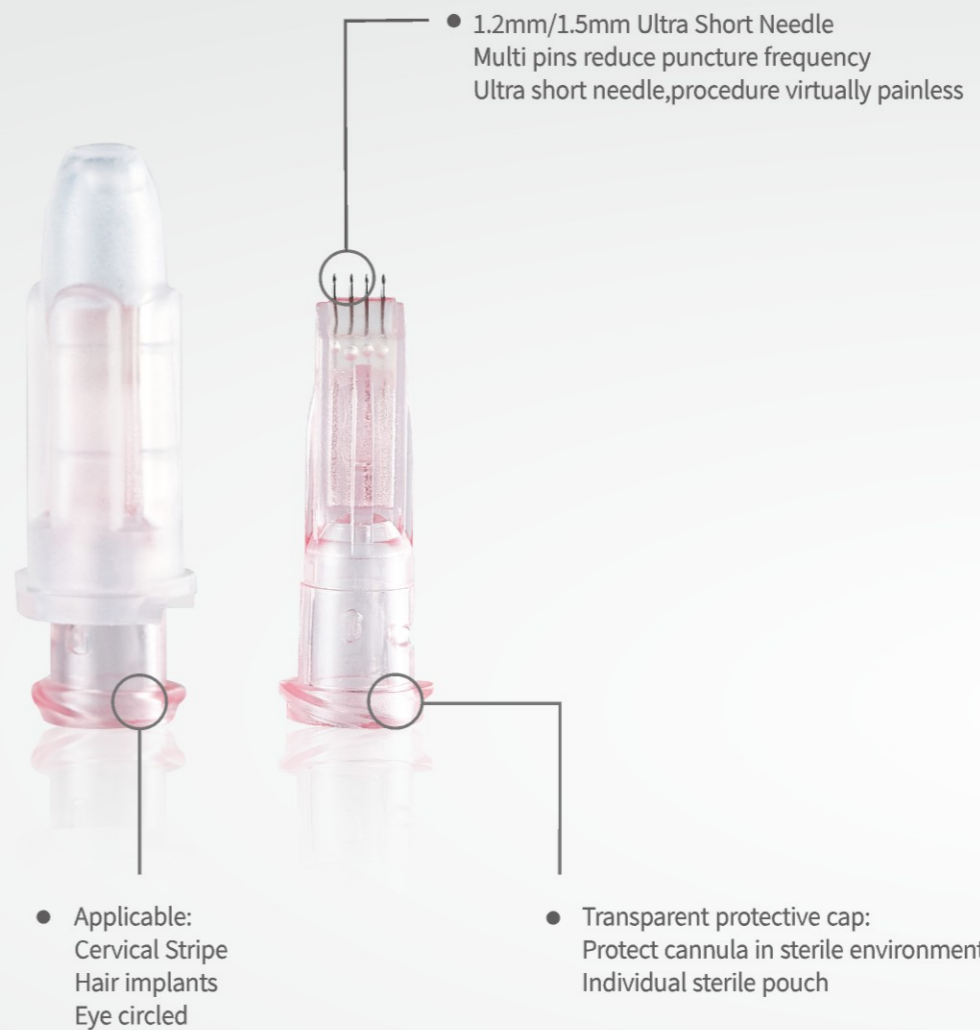


### Specification

Metric Size(mm)	0.23	0.18
Inch Size	32G	34G
Hub Color	Transparent color	
Nominal Length	1.0mm~1.5mm	
Wall Thickness	Ultra-Thin wall	
Packaging	20pcs/box, 60boxes/carton, 1200pcs/carton	

Note: Models are classified by product packaging

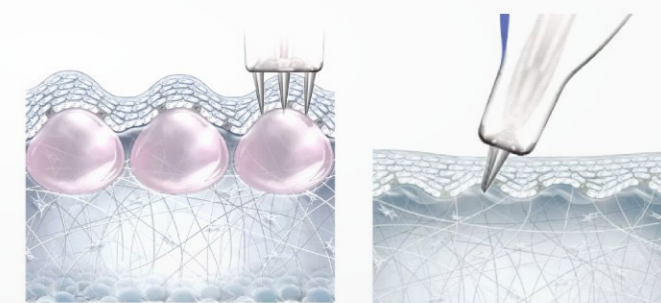
### Detail display



### Effect display:



### Principle of action:



# Multi Needle

## INSTRUCTIONS:

1. According different treatment area and ficial cases to choose different multi pins.
2. Beauty products will not leak due to negative pressure. The best choice for skin care treatment
3. Sharp needle tips gives smaller wounds and speeds up recovery. Improve wound healing and anti-aging ability.
4. One skin booster for multiple use, reduces number of times needed for puncture and pain



## SERIES:

### Dermal Series

Machine — 16/9/5Pins

Adjustable — 16/9/5Pins

Visual dial — 16Pins

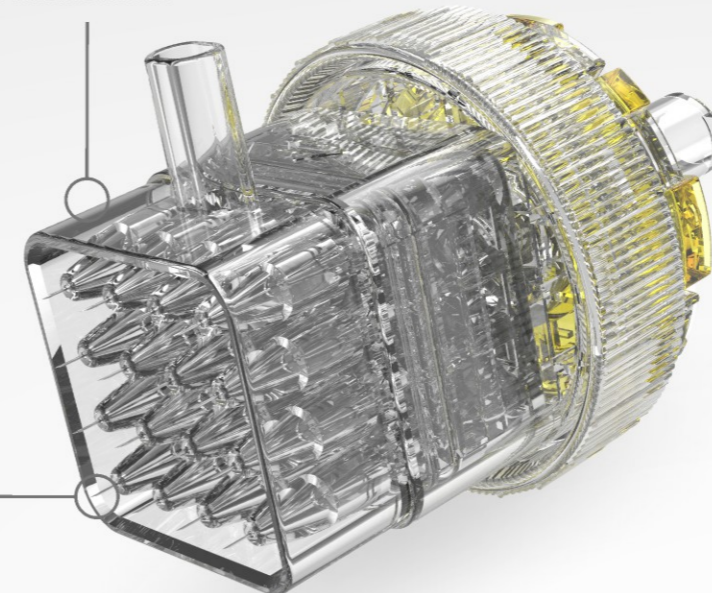
### Crystal Series

Machine — 16/9/5Pins

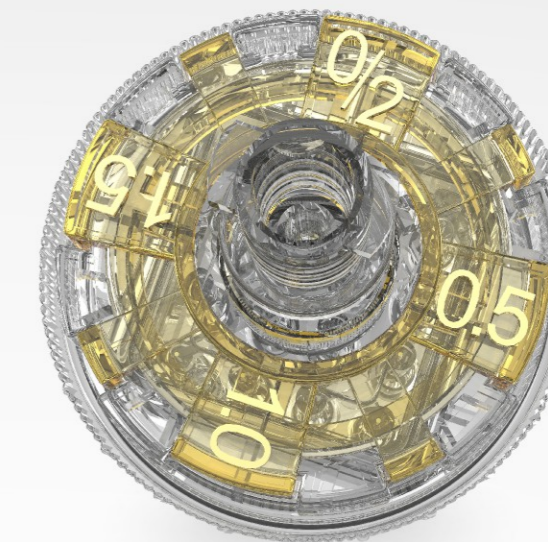
Adjustable — 16Pins

Hand — 16/9/5Pins

• Transparent protective sleeve



• Sharp pinhole



• visual dial,  
The operator is more clear about the exposed length,  
More accurate delivery of the required dose.

